

## Ari grating mat

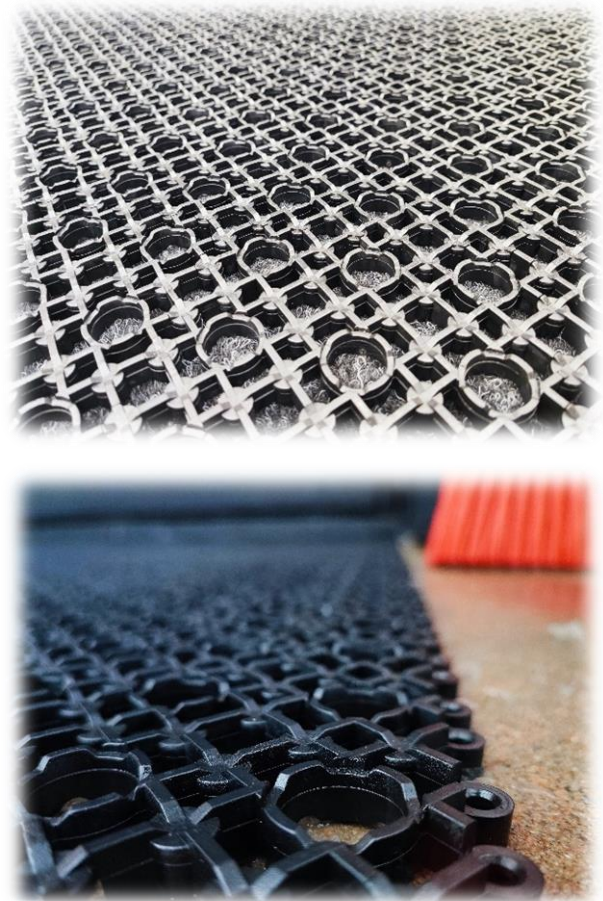
### Atplast Ari-mat - For easier cleaning

This mat is made to withstand very heavy wear and tear. The surface of the mat has a friction surface that holds well against the shoe **and the bottom has water grooves** throughout.

Ari mat is designed for both indoor and outdoor use. The mat can be installed over the entire area of the entrance hall, in a recess or as such on the door. Ari is particularly suitable for demanding applications where access directions are crossed, such as kindergarten walkways and shopping centre vestibules. Ari's rigid construction and robust connection mechanism hold the mat in place and it will not roll or undulate under heavy loads. The product has been proven to work perfectly in Nordic conditions with over thirty years of market experience.

Dirt carried from the outside drips into the gaps between the lattice structure, minimising the amount of coarse dirt carried indoors. Water grooves in the subfloor allow water to flow into the floor drains and air to circulate under the carpet, allowing any moisture in the mat substrate to be lost as efficiently as possible. The texture of the surface effectively removes dirt from shoes, tyres and rollers, and makes the mat very grippy and non-slippery even in wet conditions.

The Ari mat is always designed for the pieces to be handled, taking into account cleaning and other handling needs. If necessary, the mat can be washed with water or with pressure washer with a mildly alkaline detergent.



### Technical data

Thickness (mm)	12	16	20	25
Weight per square metre (kg/m <sup>2</sup> )	5,2	6,1	7,1	8,1
Color	Grey and Black			
Material	NBR-compound			
Hardness	78 shore			
Size per piece	1 m x 1 m			
Country of origin	Finland			
Manufacturer	Atplast Oy			